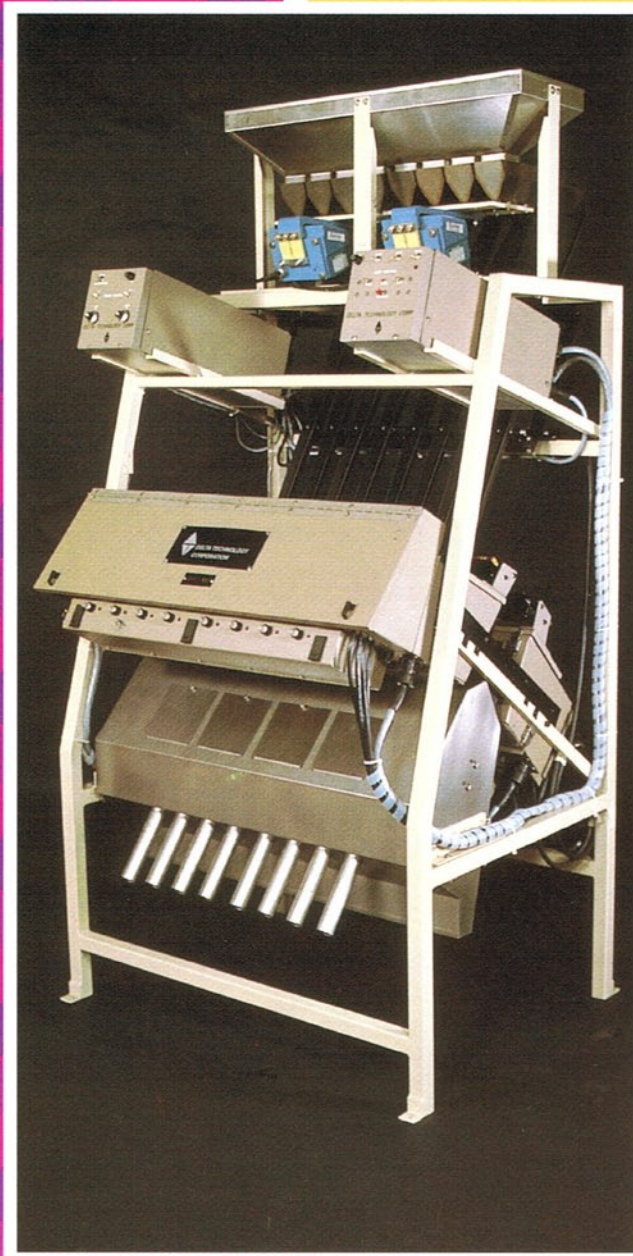


DELTA TECHNOLOGY CORPORATION



SUPERSCAN
DSRM 800

COLOR SORTER

MODEL DSRM-800 SUPERSCAN DELTA TECHNOLOGY CORP.

About Delta Technology . . .

The company was established at Houston, Texas in 1978 by dedicated engineers and businessmen, all of whom were previously associated in the sorting machine business elsewhere.

Today Delta is a world leader in this field. We are the oldest company under the same ownership. In fact we are still at the original Houston address. Through diligent and dedicated effort we are proud of our technological innovations and our leadership position.

We are a manufacturer, not a an assembler. Not only are the designs our own inventions, all metalwork, special components, coils, etc. are made under our own roof, to strictest industrial standards. This is the real guarantee of a quality product that will produce accurate results on a sustaining basis, day after day, year after year.

Delta sorters are used throughout the world, assuring quality and precision results to their owners who benefit from the knowledge that their own product, be it peas, peanuts, plastics, rice, coffee, sesame, any granular commodity will go to market and meet strict hygienic standards as to purity and quality.

The Delta engineers are interested in assuring customer satisfaction. Our network of trained field representatives in over 50 countries can be of assistance in providing advice and technical services.

Our subsidiary, Brasil Delta Tecnologia Electrônica, located in the State of São Paulo serves South America from a 3,000 Sq. metre plant (over 30,000 Sq. Ft.) located on our 12 hectare industrial park.

A successful industry is comprised of dedicated people. Delta is proud of its people and of their contribution to our industry. They are the reason why our machines set the standards of quality and efficiency.

The solution for high resolution, high production, multi-product color sorting

Patented, cutting-edge technology

Improved, third generation design
8 multiplex channels; 2 "eyes" per channel;
8 photodiodes per eye; 2560 scans per second
Microprocessor design provides: automated operation eliminating frequent manual recalibration
bright digital display that guides operator through machine setup; menu driven, available in several languages
memory capability, programming of up to 10 different sorting parameters
Computer monitoring (optional)

Proven performance

Dual eyes permit viewing of product from front and back
Multiple channels provide high thruput with high resolution scanning
Reliable operation at environmentally demanding locations
Adaptable to a variety of products and product types

Customer satisfaction

Thousands of Delta sorters in operation day after day, year after year in more than 40 countries
Rugged and durable construction requiring a minimum of maintenance
List of users available on request

A solução para alta resolução grande produção seleção de múltiplos produtos

Tecnologia de vanguarda patenteada

"Design" de 3ª geração
8 canais multiplexados, 2 "olhos" por canal; 8 fotodiodos por visão; 2560 varreduras por segundo
Controle por microprocessador oferece: operação automatizada eliminando recalibração manual frequente
visor digital brilhante que orienta o operador durante a calibragem da maquina
Capacidade de memorização, possibilitando a programação de 10 diferentes parâmetros de seleção
Monitoração por computador (opcional) através de um PC.
Controle de iluminação e ótica avançada

Desempenho comprovado

Duas visões permitem a inspeção do produto pela frente e por trás
Canais multiplos permitem alta velocidade de produção com alta resolução
Funcionamento confiável mesmo em condições adversas
Adaptável em vários tipos de produtos (amendoim, milho, semente de girassol, café, etc.)

Satisfação do cliente

Maquinas Delta usadas em 40 países
Mais de 5000 selecionadoras vendidas e em operação
Construção simples e eficaz exigindo mínima manutenção
Lista de usuários disponível

Lamp housings and viewing chamber _____
Multiple slide trays (eight in all) _____
Lamp _____
Viewing lenses with eight photodiodes in each _____
Compressed air ejectors (eight in all) _____
Accept exit chute _____
Product _____
Reject exit chute _____

MODEL DSRM-800 SUPERSCAN DELTA TECHNOLOGY CORP.

La solución en selección por color de múltiples productos granulados a alta velocidad y excelente resolución

Tecnología de vanguardia

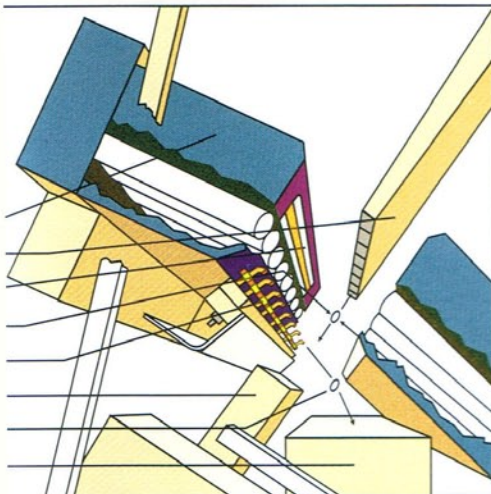
Diseño mejorado de 3a. generación
8 canales de selección; 2 vistas por canal; 8 fotodiodos por vista; 2560 rastreos por segundo
Microprocesador que facilita: Operación automática eliminando la recalibración constante, pantalla luminosa, la cual muestra en el idioma deseado los parámetros en operación, capacidad de memoria que permite hasta 10 ajustes distintos de clasificación.
Monitoreo por computadora (opcional)

Funcionamiento comprobado

Dos detectores de alta resolución colocados frente y atrás, analizan el producto.
Canales múltiples de selección permiten alto rendimiento en poco espacio
Operación confiable en condiciones adversas, y de alta demanda de producción
Versatilidad en selección para cualquier producto granulado

Usuarios satisfechos

Miles de seleccionadoras Delta en servicio en todo el mundo y en mas de 40 países vendidas y operando.
Lista de clientes disponible
Construcción duradera, operación sencilla y eficaz, requiriendo un mínimo de mantenimiento



Die Lösung für hohe Resolution, hohe Produktionsrate, Multiprodukt Farbensortierung

Patentierte, an der Grenze der Technologie

Verbesserte dritte Generation des Designs
8 multiplex Kanäle; 2 Sensorenaugen pro Kanal, 8 Photodioden pro Sensorenauge, 2.560 Scans/Sekunde
Der Mikroprozessor ermöglicht: automatische Operation-keine manuelle Rekalibrierung helle Digitalanzeige
Klare Maschinengebrauchsanweisung in verschiedenen Sprachen erhältlich.
mit Memory für bis zu 10 unterschiedlichen Sortierparameters
Computerkontrollen (Zubehör)

Bewiesene Leistung

Dual-Sensorenaugen ermöglichen zwei-seitige Besichtigung des produktes
Mehrere Kanäle versichern: hohe Durchgangsrate mit hoher Scannerresolution
Zuverlässige Operation sogar in extremen Umweltsituationen
Anpassend für verschiedene Produkte oder produkttypen

Kundenzufriedenheit

Delta Produkte im Gebrauch in 6 Kontinenten in mehr als 40 Ländern
Tausende von DELTA Sortiermaschinen bereits verkauft und in Operation
Widerstandsfähige Konstruktion bedeutet ein minimum von Pflege
Liste von Kunden ist erhältlich auf Anfrage

La solution pour un tout de résolution élevé permettant le triage de multiproduits par leur couleur avec haute résolution.

Technologie d'avant garde brevetée

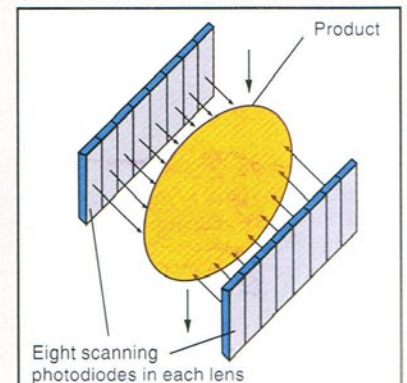
Conception révisée 3ème génération
Systeme à huit voies multiplexées utilisant 2 photodétecteurs composés chacun de 8 photodiodes 2560 balayages par seconde.
Microprocesseur interprété avec:
-Replages et calibres automatisés.
-Écran numérique à haute résolution affichant les instructions d'utilisation.
-Lapiciels programmables en plusieurs langues.
Mémoires comprenant 10 différents paramètres de traicées programmables.

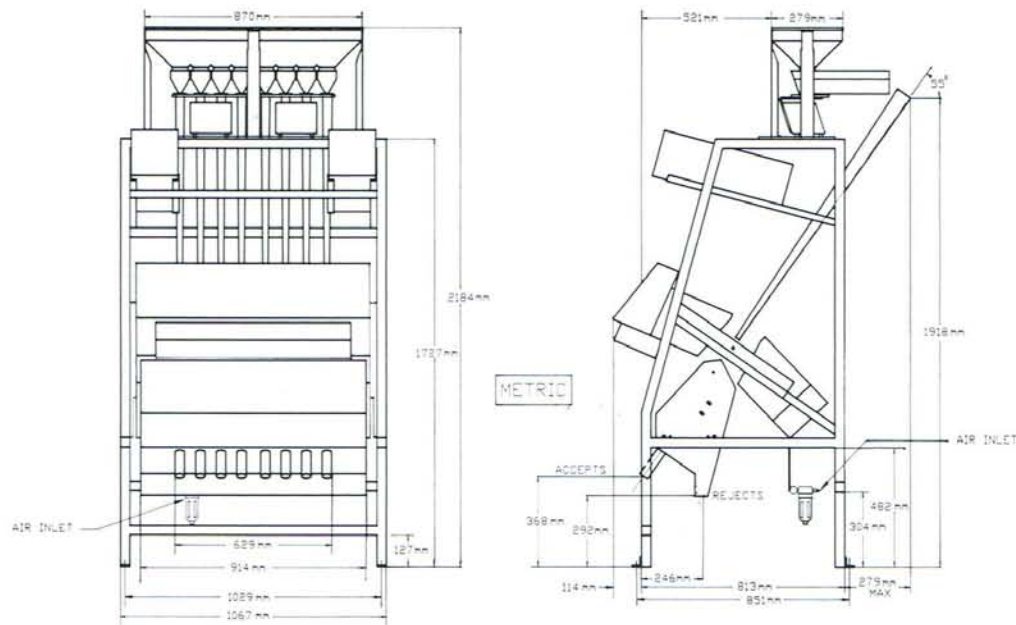
Performance Approuvée

Prise de vue du produit par l'avant et arrière
Un tout de production obtenu par un système multivoie et un balayage optique de haute resolution.
Conception fiable dans tout environnement difficile.
Adaptable a tout sorte et type de produit.

Satisfaction Assurée

Plusieurs milliers de trieuses Delta sont utilisées dans plus de 40 pays sur 6 continents
Construction rigoureuse et durable très peu de maintien
La liste de nos clients est à votre disposition





WEIGHTS & MEASUREMENTS

333 KGS. (735 LBS.) UNCRATED 431 KGS. (950 LBS.) CRATED
 105 x 85.1 x 218.4 CMS. (41.3 x 33.5 x 86 INCHES)

ELECTRICAL

180-280V AC	50/60 Hz	NOMINAL
90-140V AC	50/60 Hz	NOMINAL 1 PH
CONSUMPTION	APPROX	400 W

AIR REQUIREMENTS

Compressed air is required and not included with the machine. Nominal pressure 7 bar (100PSI)
 Consumption all 8 channels approximately 24 CFM
 Air must be clean and dry. Machines are supplied with regulator and filter.



DELTA TECHNOLOGY CORPORATION

Sales & Service Worldwide

Factories: Houston, Texas U.S.A. Espirito Santo do Pinhal, SP, Brazil

WORLD HEADQUARTERS:

1602 Townhurst,
 Houston, Texas 77043
 Phone: (713) 464-7407
 Telefax: (713)461-6753
 Telex: 496-17479 DELT HOU

In Brazil:

Rua Rachid Elias Sobrinho No.2
 Parque Industrial Delta
 13990 Espirito Santo do Pinhal,
 Estado de São Paulo, Brasil
 Fone: 196-513521 / 512042 / 513599
 Fax: 196-514180
 Telex: 193584 BRDT BR

Delta Technology Corporation follows a policy of continuous research and development and reserves the right to modify specifications, combinations, and accessories without incurring any obligation to modify machinery previously supplied. Delta Technology Corp. sigue una política de continua investigación y desarrollo y se reserva el derecho de modificar especificaciones, combinaciones y accesorios sin incurrir en ninguna obligación de modificar la maquinaria previamente provista. Manufactured under one or more of the following patents owned by Delta Technology Corp.

U.S.A. Patent Nos. 4,454,029/4,697,709/4,878,582/5,179,474/5,193,782/5,197,159	Japan Nos. 1,456,748
United Kingdom Nos. 2,180,060B/2,133,531.	Colombia No. 022,489
Mexico No. 156,593	Brazil Nos. P18604203/P18305481
Argentina No. 238,651/242,920	

Additional USA and foreign patents pending or issued.